



CONTACT US
www.empoweredcommunities.org.au
Phone: 08) 8958 2311
email: empoweredcommunities@npywc.org.au



Empowered Communities News

in the NPY region
August 2018



Craig Woods, Raymond Scales, Sally Scales, Atila Islam-Blumberg, Thomas Hampton & Ingrid Kenny— participated in the second workshop of the NPY Empowered Communities Emerging Leaders Program.

Emerging Leaders; successful second workshop

In June 2018, we were delighted to hold the second (of four) Emerging Leaders Workshop. This year-long program is the first of its kind in the NPY Region – locally designed and delivered to meet the needs of young Anangu leaders.

“We are learning and developing. As much as we are talking about being a leader, we are actually being leaders!”
(Raymond Scales, Amata)

Workshops are hands-on – with practical ‘real-life’ opportunities to practice leaderships skills, including:

- * Direct advocacy to Voyages (who manage Yulara) about how to engage with and employ more Anangu and better support communities in the region.
- * Providing feedback and information to visiting staff from the Department of Education in Canberra – who came to discuss education in the NPY region (see page 4).

The program is giving participants opportunities to have their voices heard in important discussions related to development in the region. At the same time, the participants are being supported to stretch and challenge themselves, develop new skills and grow as better leaders.

“Everyone’s voice is being heard, everyone has unique opinions and backgrounds, everyone is an amazing young leader in their own right. Its good to have our own forum to have these discussions”
(Sally Scales, Pipalyatjara)

In this workshop, the group also created a model of Anangu leadership in Pitjantjatjara and English and learned about the relationship between communities, governance and management within Aboriginal organisations. Sharing experiences, supporting and encouraging each other have been great outcomes so far.

“We are learning the steps for getting things done; for us to take control and deliver things ourselves.”
(Thomas Hampton, Mutitjulu)

Thanks to AILC UniSA, PM&C and the Mutitjulu Foundation for your support. Thanks also to NPYWC, SkillHire, Moneymob, MCAC & Nyangatjatjara College for supporting your staff to participate.





One voice, one plan: The Regional Development Roadmap

Did you know that Empowered Communities is creating a ‘**Regional Development Roadmap**’? This Roadmap is a unifying plan for development in the NPY region. It is being created to ensure communities, service providers and Government are all aligned in working towards Anangu identified goals.

“This roadmap is for all of us, with Anangu in the driver’s seat. Lets travel together on one path, Anangu way.”

The Roadmap will provide recommendations that address key priorities for Anangu development in the region. It aims to facilitate working together on an Anangu-led approach to local issues, and how to respond to them.

The Regional Development Roadmap will be taking shape by the end of 2018. It brings together for the first time a complete snapshot of...

- ◆ the existing programs and services in the region.
- ◆ the ideas and aspirations of NPY communities, plus strengths (what’s working), and gaps (what’s not).
- ◆ a framework and set of recommendations for action - from program to policy levels for the next 5 years.

Our consultation across the NPY Lands confirms that Anangu share many common concerns...

1. Education, culture and youth support
2. Work, meaningful engagement and financial security.
3. Anangu led decision making and community empowerment

These top priority issues will be the main focus of the Regional Development Roadmap (see below).

Keeping safe, housing & infrastructure, & caring for the vulnerable are also raised as key concerns. Underpinning each of these priorities is a strong commitment to maintaining Anangu culture and traditional values of **tjukurpa** (culture), **walytja** (family), **manta** (land) and **wangka uti** (language).



A plan for Anangu-led development in the NPY region...

Education, culture & youth support

- Improved **school access, attendance, retention & quality**
- Wrap-around **youth support**, recreational activities and personal development programs
- School-to-work **transition support**
- Cultural transmission & **culturally grounded education**

Work, meaningful engagement & financial security

- Better & more **jobs**; meaningful pathways and community roles
- Workplace **support & skill development**
- Effective, appropriate **income support**
- **Enterprise** & economic development for individuals and community

Anangu-led decision making & community empowerment

- Strengthened community **governance** & control
- Sustainable **leadership development** & capacity building
- Culturally informed **service delivery**
- Increasing Anangu **influence and decision-making** within the region

CONTACT US

www.empoweredcommunities.org.au

Phone: 08) 8958 2311

email: empoweredcommunities@npywc.org.au



Anangu-led procurement and funding reform



Anangu Reference Group members have undergone training in preparation for their role in reviewing IAS funding for the NPY region.

Empowered Communities is starting to make big steps forward in achieving ‘subsidiary’ - whereby Aboriginal people are directly involved in the decisions that affect them, their families and communities.

The Minister for Indigenous Affairs has committed to ensuring that Aboriginal people have a more direct say in Government spending on programs funded under the ‘Indigenous Advancement Strategy’ (IAS). We have developed a checklist to ensure all programs meet Anangu-identified priorities, and in future each IAS application will be reviewed by an Anangu reference group. The group will provide recommendations regarding how effective the programs are at working with Anangu to achieve development and empowerment in the NPY Lands.

“There are too many services and we don’t know who they are and this creates a lot of confusion...Too many services, not enough happiness”

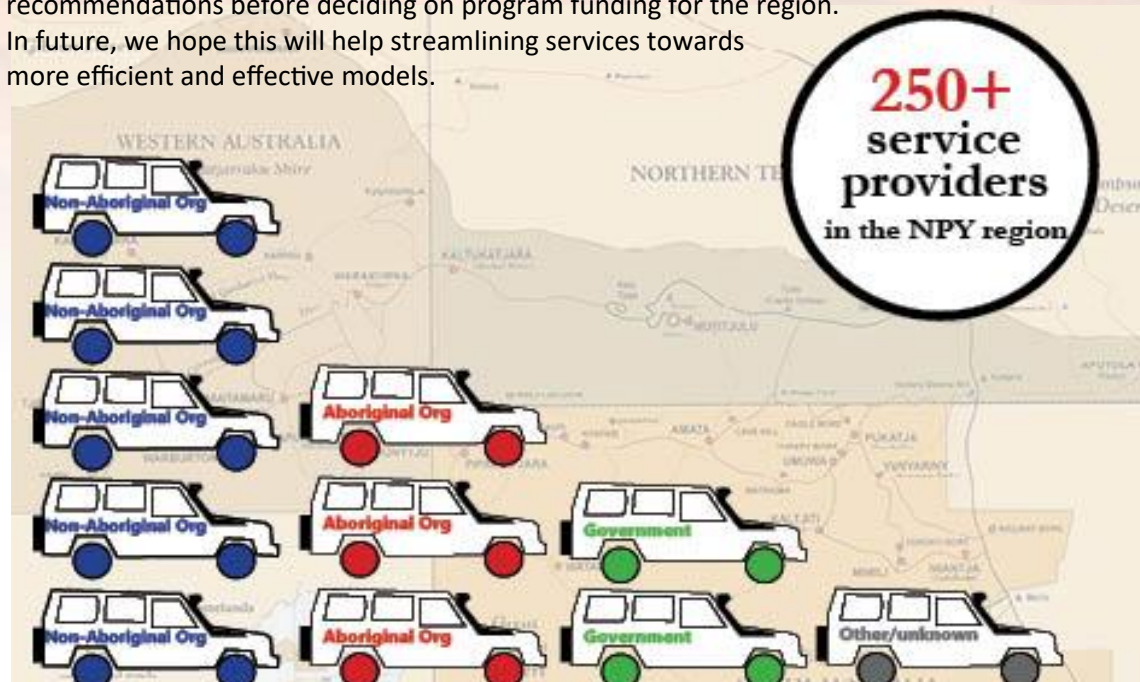
(Sylvia Benson, Indulkana; Senior Anangu leader and APY Executive member)

This is the first time that the Minister for Indigenous Affairs will directly consider Anangu recommendations before deciding on program funding for the region. In future, we hope this will help streamlining services towards more efficient and effective models.

Our research so far* has revealed more than 250 different organisations working in the NPY Lands (that’s around 1 organisation for every 20 people!)

- 45% Non-Aboriginal organisations
- 29% Aboriginal organisations
- 17% Government agencies
- 9% Other or unknown providers

If you would like more information or can help us complete this picture – please get in touch.



**This information is not yet a complete picture... It is based on data from 2 Federal Departments (PM&C & DSS), as well as anecdotal information from organisations operating within NPY communities.*



CONTACT US

www.empoweredcommunities.org.au

Phone: 08) 8958 2311

email: empoweredcommunities@npywc.org.au



Like us!

Empowered Communities News

Closing time at Mintabie

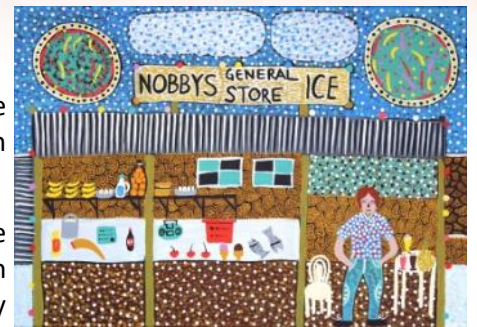
The South Australian Government has announced the closure of Mintabie and a return of the land to APY control, as from July 1, 2019.

This is great result following lobbying from Anangu who have been concerned about the effects of drugs, alcohol and book-up in Mintabie. Empowered Communities, service providers and Anangu leaders shared these concerns with the Prime Minister Malcolm Turnbull during his visit to Fregon in 2016. Andrea Mason (Empowered Communities co-chair and CEO of NPY Women’s Council) told the Prime Minister -

‘The women are speaking with unity & one voice on this.’

As a result of this strong, united Anangu voice, the Prime Minister requested the South Australian Government to investigate, which resulted in the recommendation to close down the township of Mintabie and hand it back to APY control.

The South Australian Government is now seeking advice about how to best manage this process. This is an opportunity for Anangu to share ideas and take the lead in creating a bright new future vision for Mintabie. If you would like to have your say on Mintabie’s future, contact us... be a part of shaping change!



*‘Closing Time at Mintabie’, by Kaylene Whiskey
Courtesy of the artist and Iwantja Arts*

NPY Regional Economy Workshop

On June 12, 2018, Empowered Communities hosted the first ‘NPY Regional Economy Workshop’ in Alice Springs. During the workshop, 38 participants – including Anangu, Government and service providers talked about ‘The Economy’ in the NPY region – What is it and how can we map, measure and understand it? We asked - How much money is coming in and out of communities? Where does it come from? Where does it go? How do we collect data and measure it? How do we increase employment opportunities? We also discussed the cost of living, community income and opportunities for economic development for individuals and communities .



Thanks to PM&C for supporting this event. We look forward to continuing this important work through the Regional Development Roadmap.

Canberra Education Department visit NPY Region

Thanks to the Australian Government Department of Education and Training in Canberra who recently lent us Jennifer Hayes and Louise Hanlon! These women came to central Australia in June 2018. They visited Yulara, Kenmore Park, Ernabella and Umawa, and spoke with Anangu education experts right across the tri-state region.

Louise and Jennifer have been helping us get a grasp on the education system across the NPY Lands. Their work is also helping shape the EC Regional Development Roadmap and an Anangu-led vision for education in the future.



Visitors from Canberra’s Education Department met with education experts, including members of the PYEC.